

Is|tree

is a Korean green-beauty brand that focuses on ingredients that are safe for skin and contains true effects, by researching the optimal combination of natural and functional ingredients.



ISland



Nature



Tree

OUR PRODUCTS

Active Green

Eco-friendly

Living together



Hyaluronic Acid Toner Plus



#Quintuple hyaluronic acid

#Ampoule toner

#Skin booster

#Core moisturizing

Is2tree

HYALURONIC ACID
TONER PLUS®

Five types of hyaluronic acid

Contains 5 different hyaluronic acids
with different molecular sizes to deliver
abundant moisture.

Hyaluronic acid aqueous solution 50%
Acts as a hydration and plumping agent
Aqueous Ampoule Formulation

Water, Propanediol, 1,2-Hexanediol, Sodium Hyaluronate, Trehalose, Sodium PCA, Biosaccharide Gum-1, Glycerin, Hyaluronic Acid, Camelia Sinensis Leaf Extract, Glycyehiza Glabra (Licorice) Root Extract, Chamomilla Recutita (Matricaria) Flower Extract, Rosmarinus Officinalis (Rosemary) Leaf Extract, Polygonum Cuspidatum Root Extract, Cantella Asiatica Extract, Aloe Barbadensis Leaf Extract, Althaea Rosea Root Extract, Betula Alba Juice, Portulaca Oleracea Extract, Hydrolyzed Hyaluronic Acid, Hydrolyzed Sodium Hyaluronate, Sodium Hyaluronate, Crosspolymer, Beta-Glucan, Betaine, Panthenol, Cellulose Gum, Pentylene Glycol, Caprylyl Glycol, Butylene Glycol, Ethylhexylglycerin, Scutellaria Baicalensis Root Extract

Toning preparation for daily care. In addition to toning, its task is to moisturize the skin, which is why it contains **sodium hyaluronate, betaine, and aloe extract.** The tonic contains many plant extracts that have a toning and antioxidant effect, which is important in everyday skin care.



Hyaluronic Acid Water Sleeping Mask

Night mask for all skin types, which thanks to **hyaluronic acid and betaine** deeply and deeply moisturizes the skin and regenerates it. The addition of **ceramide NP** rebuilds and strengthens the hydrolipid barrier, and **beta-glucan** reduces fine lines and protects the skin against the harmful effects of free radicals.

Water, Dipropylene Glycol, Methylpropanediol, Glycerin, Beta-Glucan, 1,2-Hexanediol, Butylene Glycol, Polyquaternium-51, Sodium Hyaluronate, Centella Asiatica Extract, Ficus Carica (Fig) Fruit Extract, Dioscorea Japonica Root Extract, Hydrogenated Lecithin, Glycosyl Trehalose, Hydrogenated Starch Hydrolysate, Tromethamine, Betaine, Sodium Chloride, Sodium PCA, Panthenol, Citric Acid, Trisodium EDTA, Dimethicone, Carbomer, Hydrolyzed Corn Starch, Allantoin, Sucrose, Ceramide NP, Tocopherol, Potassium Laurate, Hydroxypropyltrimonium Hyaluronate, Hydrolyzed Hyaluronic Acid, Sodium Acetylated Hyaluronate, Ascorbyl Propyl Hyaluronate, PEG-240/HDI Copolymer Bis-Decyltetradeceth-20 Ether, Ethylhexylglycerin

Hyaluronic Acid Moist Cream

Intensely moisturizing face skincare cream. It contains hyaluronic acid in five forms, which significantly affect the hydration of the skin surface. Their action is enhanced by panthenol and cholesterol, which also improve the condition of the skin and accelerate regeneration.



Water, Glycerin, Hydrogenated Polydecene, Caprylic/Capric Triglyceride, Dipropylene Glycol, Cyclohexasiloxane, Butyrospermum Parkii (Shea) Butter, Polyglyceryl-3 Methylglucose Distearate, Cetyl Alcohol, Pentylene Glycol, Sodium Hyaluronate, Camelia Sinensis Leaf Water, Prunus Armeniaca (Apricot) Kernel Oil, Argania Spinosa Kernel Oil, Carthamus Tinctorius (Safflower) Seed Oil, Hydrolyzed Hyaluronic Acid, Avena Sativa (Oat) Kernel Extract, Cynara Scolymus (Artichoke) Leaf Extract, Laminaria Japonica Extract, Eclipta Prostrata Leaf Extract, Pteris Multifida Extract, Beta-Glucan, Hydrogenated Lecithin, Glyceryl Caprylate, Sodium Stearoyl Glutamate, Methylpropanediol, Fructooligosaccharides, Raffinose, Ceramide NP, Hydroxypropyltrimonium Hyaluronate, Panthenol, Palmitoyl Pentapeptide-4, Polglyceryl-10 Laurate, Pentaerythrityl Distearate, Sodium Acetylated Hyaluronate, Cholesterol, Folic Acid, Butylene Glycol, Hydroxyacetophenone, Ascorbyl Propyl Hyaluronate, Polyquaternium-51, Tromethamine, Ammonium Acryloyldimethyltaurate/VP Copolymer, Ethylhexylglycerin, 1,2-Hexanediol, Disodium EDTA, Tocopherol

Is2tree

TW-Real Bifida Ampoule

High-concentration Bifida fermentation lysate and triple peptides, added with skin activation ingredients from the fermentation process, reinforce collapsed skin barrier and keep your skin smooth and elastic.



Is2tree
TW-REAL
BIFIDA AMPOULE
TONE & WRINKLE CARE
AMPOULE

High functional ampoule which contain bifida ferment lysate and triple peptide for skin tightening.

Water, Butylene Glycol, Dipropylene Glycol, Glycerin, Bifida Ferment Lysate, Niacinamide, 1,2-Hexanediol, Illicium Verum (Anise) Fruit Extract, Allantoin, Hydroxyethylcellulose, Panthenol, Scutellaria Baicalensis Root Extract, Arginine, Carbomer, Adenosine, Disodium EDTA, Lactobacillus/Rice Ferment Filtrate, Sodium Hyaluronate, Chamaecyparis Obtusa Leaf Extract, Hydrolysed Collagen, Origanum Vulgare Leaf Extract, Salix Alba (Willow) Bark Extract, Cinnamomum Cassia Bark Extract, Lactobacillus/Pumpkin Ferment Extract, Lactobacillus/Soybean Ferment Extract, Portulaca Oleracea Extract, Beta-Gucan, Acetyl Hexapeptide-8, Palmitoyl Tripeptide-1, Copper Tripeptide-1

C-NIACIN Toning Ampoule

#Hippophae_
Rhamnoides_Fruit

#Vitamin_bomb

#Vitality_Charge

#Moisture_brightening



Hippophae Rhamnoides Fruit Extract, Butylene Glycol, Pentylene Glycol, Glycerin, Betaine, Water, Niacinamide, Propanediol, 1,2-Hexanediol, Ethyl Hexanediol, Sodium Polyacrylate, Dipotassium Glycyrrhizate, Ammonium Acryloyldimethyltaurate/VP Copolymer, Panthenol, Allantoin, Boswellia Serrata Resin Extract, Aloe Barbadensis Leaf Extract, Beta-Glucan, Melia Azadirachta Flower Extract, Melia Azadirachta Leaf Extract, Sodium Hyaluronate, Bioflavonoids, Ocimum Sanctum Leaf Extract, Curcuma Longa (Turmeric) Root Extract, Physalis Alkekengi Fruit Extract, Brassica Oleracea Italica (Broccoli) Extract, Moringa Oleifera Seed Oil, 3-O-Ethyl Ascorbic Acid, Polysorbate 80, Corallina Officinalis Extract, Cucurbita Pepo (Pumpkin) Fruit Extract, Coccinia Indica Fruit Extract

Clear Skin 8% AHA Essence



Essence for skin and dry skin, which offers the highest quality: **lactic and glycolic B exfoliates** skin moisture, cleans, softens and anti-inflammatory. The addition of extracts: from **green tea leaves and calendula** soothes irritation and inflammation, **hyaluronic acid**, deeply moisturizes. The product has a light consistency.



Water, Lactic Acid, Glycolic Acid, Glycerin, Butylene Glycol, Potassium Hydroxide, Glycyrrhiza Glabra (Licorice) Root Extract, Camellia Sinensis Leaf Extract, Aloe Barbadensis Leaf Extract, Calendula Officinalis Flower Extract, Chamomilla Recutita (Matricaria) Flower Extract, Rosamrinus Officinalis (Rosemary) Leaf Extract, Portulaca Oleracea Extract, Lavendula Angustifolia (Lavender) Flower/Leaf/Stern Extract, Aloe Barbadensis Leaf Juice Powder, Sodium Hyaluronate, Glyceryl Caprylate, Asiaticoside, Dextrin, Panthenol, Madecassoside, Allantoin, 1,2-Hexanediol, Dipotassium Glycyrrhizate, Glycereth-25, PCA Isostearate, Hydroxyethylcellulose

Green Tea Fresh Toner

Contains the purest green tea extract
from Jeju Island of South Korea



A tonic for problematic, oily and acne-prone skin. **The extracts of green tea, Asian pennywort and white willow bark** contained in the product have anti-inflammatory, antiseptic and soothing properties, as well as support healing and regeneration of the skin. In turn, **ginkgo biloba leaf** extract is an antioxidant and additionally slows down the aging process of the skin. The composition should include hyaluronic acid, which binds water in the epidermis, maintains optimal hydration and smoothes the skin.

Camellia Sinensis Leaf Extract, Water, Ginkgo Biloba Leaf Extract, Centella Asiatica Extract, Salix Alba (Willow) Bark Extract, Vaccinium Angustifolium (Blueberry) Fruit Extract, Pinus Palustris Leaf Extract, Ulmus Davidiana Root Extract, Oenothera Biennis (Evening Primrose) Flower Extract, Pueraria Lobata Root Extract, Hydrolyzed Hyaluronic Acid, Ammonium Acryloyldimethyltaurate/VP Copolymer, Allantoin, Dipotassium Glycyrrhizate, Beta-Glucan, Disodium EDTA, Hydroxyacetophenone

Hyaluronic Acid - Watery Sun Gel SPF50+/PA++++

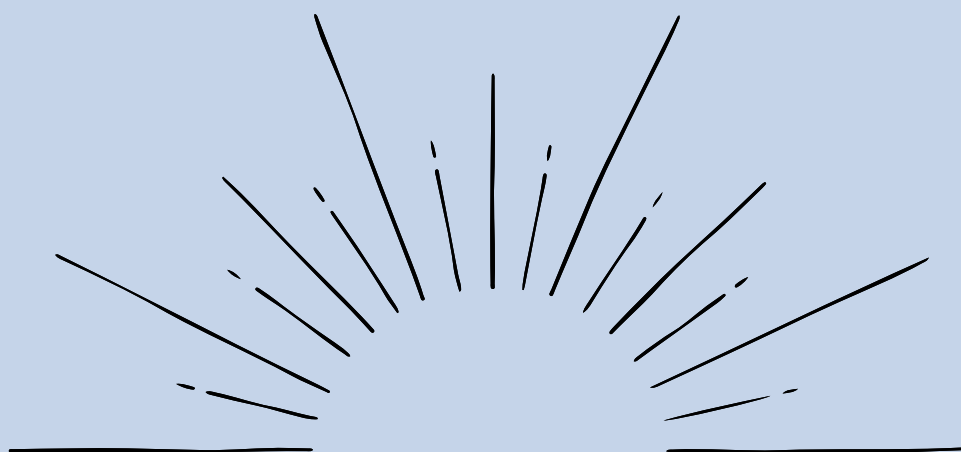


#Refreshing_Moisture
_Sun_Cream

#Moisture_Locking

#Strengthens_Skin_Barrier

#Organic_Sunscreen



Water, Butylene Glycol, Ethylhexyl Salicylate, Homosalate, Dibutyl Adipate, Niacinamide, Bis-Ethylhexyloxyphenol, Methoxyphenyl Triazine, Cyclopentasiloxane, Methylene Bis-Benzotriazolyl Tetramethylbutylphenol, Polysilicone-15, Diethylamino Hydroxybenzoyl Hexyl Benzoate, 1,2-Hexanediol, Pentylene Glycol, Pinus Pinaster Bark Extract, Ceramide NP, Centella Asiatica Extract, Glycerin, Portulaca Oleracea Extract, Houttuynia Cordata Extract, Olea Europaea (Olive) Fruit Oil, Ficus Carica (Fig) Fruit Extract, Sodium Hyaluronate, Ceteth-10, Hydrogenated Lecithin, Decyl Glucoside, Propanediol, Tocopherol, Astaxanthin, Hyaluronic Acid, Sodium Hyaluronate Crosspolymer, Ascorbyl Propyl Hyaluronate, Hydrolyzed Hyaluronic Acid, Hydroxypropyltrimonium Hyaluronate, Acrylates/C10-30 Alkyl Acrylate Crosspolymer, Sodium Acetylated Hyaluronate, Hydrolyzed Sodium Hyaluronate, Adenosine, Xanthan Gum, Cetyl PEG/PPG-10/1 Dimethicone, Tromethamine, Carbomer, Propylene Glycol, Ethylhexylglycerin

CONTACT US



www.cosibella.pl



[@cosibella.pl](https://www.instagram.com/cosibella.pl)



[@cosibellapl](https://www.facebook.com/cosibellapl)

cosibella